



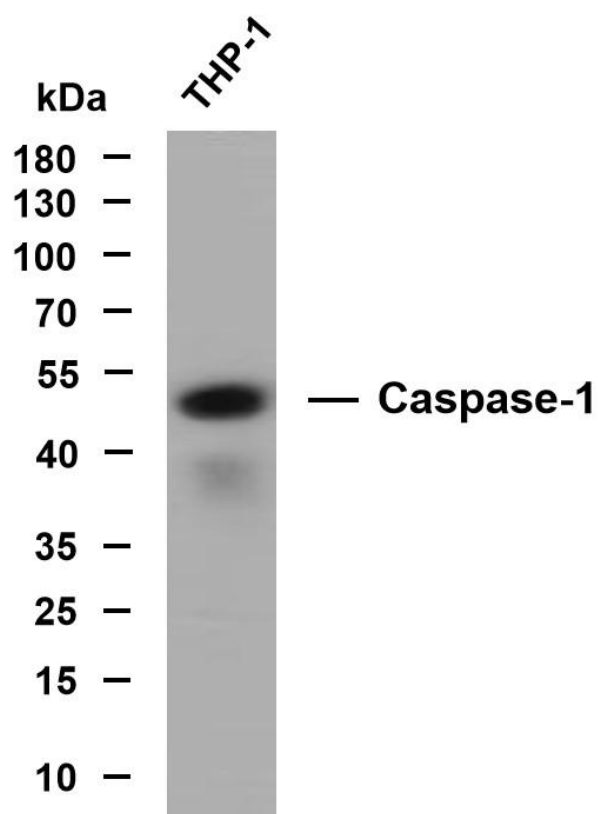
Caspase-1 (PTR1317) mouse mAb

货号	YP-Ab-18076
同位型	IgG
应用	WB;IF;ELISA
种属	Human;Mouse;Rat;Horse;Pig;
靶点	Caspase-1
基因名称	CASP1 IL1BC IL1BCE
蛋白名称	Caspase-1 (CASP-1) (EC 3.4.22.36) (Interleukin-1 beta convertase) (IL-1BC) (Interleukin-1 beta-converting enzyme) (ICE) (IL-1 beta-converting enzyme) (p45) [Cleaved into: Caspase-1 subunit p20; Caspas
免疫原	Synthesized peptide derived from human Caspase-1 AA range: 350-404
特异性	This antibody detects endogenous levels of Caspase-1 protein.
组成	PBS, 50% glycerol, 0.05% Proclin 300, 0.05%BSA
来源	Mouse, Monoclonal/IgG2b, kappa
稀释	WB 1:500-2000. IF 1:100-500. ELISA 1:1000-5000
纯化工艺	Protein G
实测条带	45kD
背景	caspase 1(CASP1) Homo sapiens This gene encodes a protein which is a member of the cysteine-aspartic acid protease (caspase) family. Sequential activation of caspases plays a central role in the execution-phase of cell apoptosis. Caspases exist as inactive proenzymes which undergo proteolytic processing at conserved aspartic residues to produce 2 subunits, large and small, that dimerize to form the active enzyme. This gene was identified by its ability to proteolytically cleave and activate the inactive precursor of interleukin-1, a cytokine involved in the processes such as inflammation, septic shock, and wound healing. This gene has been shown to induce cell apoptosis and may function in various developmental stages. Studies of a similar gene in mouse suggest a role in the pathogenesis of Huntington disease. Alternative splicing results in transcript variants encoding distinct isoforms. [provided by RefSeq, Mar 2012],
功能	Thiol protease involved in a variety of inflammatory processes by proteolytically cleaving other proteins, such as the precursors of the inflammatory cytokines interleukin-1 beta (IL1B) and interleukin 18 (IL18) as well as the pyroptosis inducer Gasdermin-D (GSDMD), into active mature peptides . Plays a key role in cell immunity as an inflammatory response initiator: once activated through formation of an inflammasome complex, it initiates a pro-inflammatory response through the cleavage of the two inflammatory cytokines IL1B and IL18, releasing the mature cytokines which are involved in a variety of inflammatory processes . Cleaves a tetrapeptide after an Asp residue at position P1 . Also initiates pyroptosis, a programmed lytic cell death pathway, through cleavage of GSDMD . In contrast to cleavage of interleukins IL1B and IL1B, recognition and cleavage of GSDMD is not strictly depend



细胞定位	0
组织表达	Expressed in larger amounts in spleen and lung. Detected in liver, heart, small intestine, colon, thymus, prostate, skeletal muscle, peripheral blood leukocytes, kidney and testis. No expression in the brain.
浓度	1 mg/ml
储存	-15°C to -25°C/1 year(Do not lower than -25°C)
有关注意事项	Avoid repeated freezing and thawing!
使用建议	This product can be used in immunological reaction related experiments. For more information, please consult technical personnel.

Products Images



Whole cell lysates were separated by 10% SDS-PAGE, and the membrane was blotted with anti-Caspase-1 (PTR1317) antibody. The HRP-conjugated Goat anti-Mouse IgG(H + L) antibody was used to detect the antibody. Lane 1: THP-1